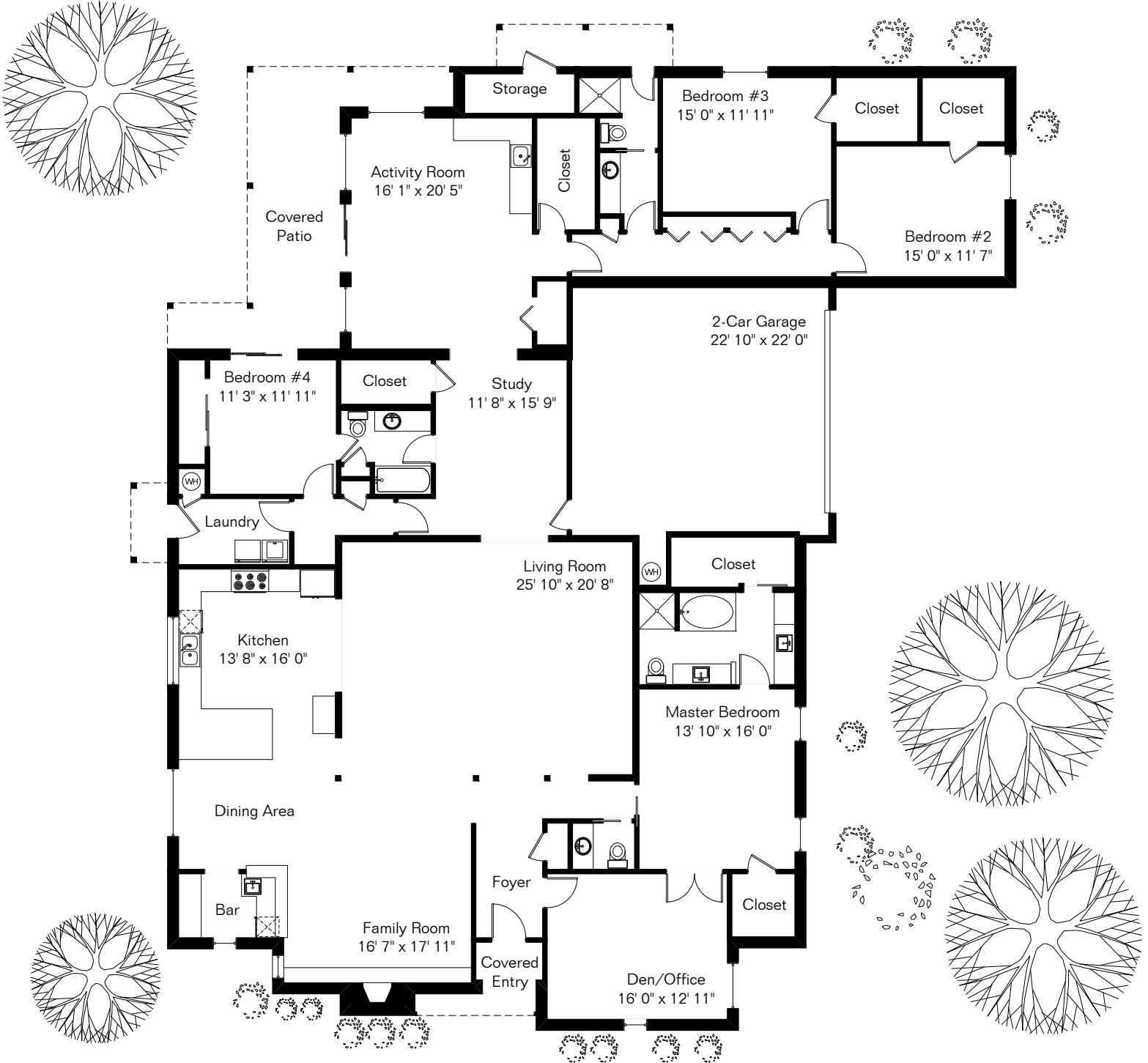


The square footages and room size information are deemed to be reliable but are not guaranteed and should be independently verified. This drawing is for marketing purposes only.

2842 N Calle Ladera



Site Visit January 2020

0 ft. 6 ft. 10 ft. 20 ft.



Living Area 4,097 Sq Ft
Garage 514 Sq Ft

Copyright 2020 Floor Plans First! LLC
All Rights Reserved.

www.FloorPlansFirst.com

Toll Free (877) 887-1500
Voice (520) 881-1500

